

Rocker Switch PJS-606P Series



SPECIFICATIONS

- Rating: K: 6A, 125VAC/3A, 250VAC (UL, CSA)
H: 10A, 125VAC/6A, 250VAC (UL~KEMA)
L: 5A, 125L (Inrush Current 80A)
T: 16A 125VAC/10A 250VAC T105
- Contact resistance: 20mΩ Max.
- Insulation resistance: 100MΩ Min. at 500VDC
- Dielectric strength: 1,500VAC for 1 minute
- Safety approval:

PART NUMBERING SYSTEM

{1} PJS — {2} 606P {3} {4} {5} Rocker / Housing {6} {7}

{1} Series: PJS: Rocker switch
 {2} Model: 606P
 {3} Circuit: A: 4P ON-OFF D: 4P (ON)-OFF L: 4P illuminated AI: 4P ON-OFF with indicator
 B: 6P ON-ON E: 4P ON-(OFF) AA: 4P double ON-OFF BB: 6P double ON-ON
 C: 6P ON-OFF-ON F: 6P (ON)-ON AB: 5P ON-OFF/ ON-ON

*{ } : Momentary

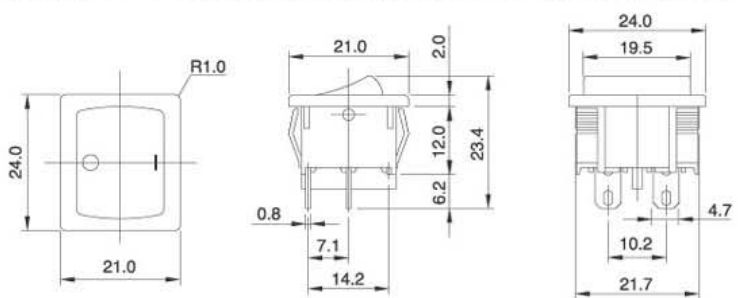
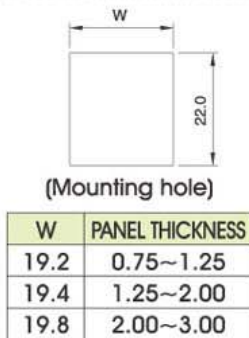
{4} Terminal:

{5} Color: B: Black, G: Green, H: Gray, I: Ivory, R: Red, W: White, Y: Yellow

{6} Stamp: 1: 2: 3: 4: 5: 6: 7:
 8: 9: 10: 11: 12: 13:

DIMENSIONS (Unit:mm)

PJS-606P*Q



PJS-606P*R

