


# Rocker Switch PJS-602 Series

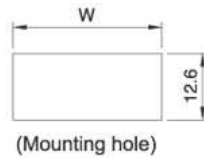
## SPECIFICATIONS

1. Rating: 10A, 125VAC
2. Contact resistance: 50mΩ Max.
3. Insulation resistance: 100MΩ Min. at 500VDC
4. Dielectric strength: 1,000VAC for 1 minute
5. Electrical life: 5,000 cycles Min.
6. Mechanical life: 10,000 cycles Min.
7. Terminal material: Copper, Alloy, Silver plated
8. Push force: 0.35kg Min.

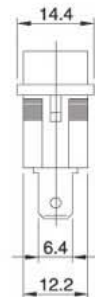
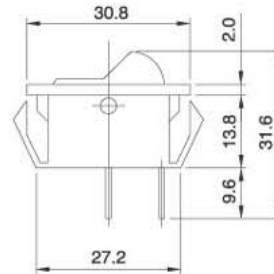
## PART NUMBERING SYSTEM

{1} PJS	—	{2} 602	{3}	{4} Rocker / Housing	{5}
{1} Series: PJS: Rocker switch					
{2} Model: 602					
{3} Circuit: A: 2P SPST ON-OFF, B: 3P SPDT ON-ON, L: 3P SPST ON-OFF illuminated					
{4} Color: B: Black, G: Green, R: Red, W: White, Y: Yellow					
{5} Stamp: 1: 					

## DIMENSIONS (Unit:mm)



W	PANEL THICKNESS
28.0	0.75~1.25
28.2	1.25~2.00
28.5	2.00~3.00






# Rocker Switch PJS-636 Series

## SPECIFICATIONS

1. Rating: 3A, 250VAC.
2. Contact resistance: 1A 5VDC 30mΩ Max.
3. Insulation resistance: 500VDC 100MΩ
4. Withstand voltage: 500VAC 1 minute
5. Operating force: 300±100g
6. Life cycles: 10,000 cycles
7. Safety approval: 

## PART NUMBERING SYSTEM

{1} PJS	—	{2} 636	{3}	{4} Rocker / Housing	{5}
{1} Series: PJS: Rocker switch					
{2} Model: 636					
{3} Circuit: A: 3P ON-OFF, B: 2P ON-ON					
{4} Color: B: Black					
{5} Stamp: 1:  2:  3: 					

## DIMENSIONS (Unit:mm)

